

## General Data

[Back to the table of contents](#)

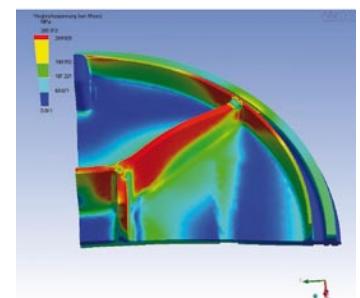
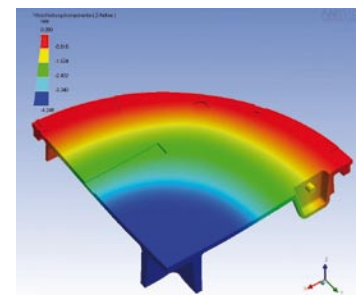
**IF THE NAME VONROLL IS ON IT – THERE’S SWISS QUALITY IN IT**



vonRoll cast-iron manholes and gratings – Our production facility in Rondez (Delémont)



Series production of cast-iron manholes and gratings in our works in Rondez (Delémont)



vonRoll engineering centre in Emmenbrücke – weight optimisation and statics

Subject to change without notice

**General data**
**Building-quality cast-iron**

Designation	Von Roll hydro	EN 124	Erzenberg	BGS
<b>Solid cast iron manhole covers</b>				
Solid casting with Unigriff, square frame	2562 060 00	A15	6180, 6181	111Q, 111PQ
Solid casting with Unigriff, square frame	2563 060 00	B125	6182, 6183	115Q, 115PQ
Solid casting with Unigriff, on cement pipe	2582 060 00	A15	6150	111-60C
Solid casting with Unigriff, on cement pipe	2583 060 00	B125	6152	115-60C
Solid casting with Unigriff, in cement pipe rebate	2612 060 00	A15	6200	111-60
Solid casting with Unigriff, in cement pipe rebate	2613 060 00	B125	6215	115-60
Solid casting, Ventilation	2615 060 00	B125		
Solid casting, EN 124 D400 / VSS	2616 060 00	D400	6513 (D400)	180-60
Solid casting, EN 124 D400 / VSS	2616 060 10	D400	6513 (D400)	180-60S
Solid casting, EN 124 D400 / VSS Ventilation	2618 060 00	D400	6514 (D400)	190-60
Solid casting, EN 124 D400 / VSS Ventilation	2618 060 10	D400	6514 (D400)	190-60S
Solid casting, EN 124 D400 / VSS PISO	2617 010 10	D400		
Solid casting, EN 124 D400 / VSS PISO Ventilation	2619 010 10	D400		
Solid casting, EN 124 D400 / VSS, NIVROLL	2632 010 10	D400	6511 (D400)	N 180
Solid casting, EN 124 D400 / VSS, NIVROLL Ventilation	2633 010 10	D400	6512 (D400)	N 190
Solid casting, EN 124 D400, DOPROLL, hinged	2634 060 00	D400		210
Solid casting, odour-sealed	2640 050 00	A15	6260a	121 / 202-50
Solid casting, odour-sealed	2640 060 00	A15	6260a	121 / 202-60
Solid casting, odour-sealed	2640 080 00	A15	6260a	121 / 202-80
Solid casting, odour-sealed	2642 alle NW	B125	6262	125 / 203-60
Solid casting with Unigriff, square frame	2644 060 00	C250	6521	140Q
Solid casting with Unigriff, EN124	2645 060 00	C250	6291 N	140-60
Solid casting with Unigriff, EN124, for internal pressure	2646 060 07	C250		193
Solid casting with Unigriff, EN124, for internal pressure	2646 080 07	C250		
Solid casting with Unigriff, EN124, Ventilation	2647 060 00	C250		
Solid casting, EN124, square frame, Ventilation	2649 060 00	C250	6550	
Solid casting EN124 D400	2650 060 00	D400	6503 / 13 / 25 / 48	180-60
Solid casting EN124 D400	2650 060 10	D400	6503 / 13 / 25 / 48	180-60S
Solid casting EN124 D400	2650 080 all types	D400		
Solid casting EN124 D400 Ventilation	2651 060 00	D400	6504 / 14 / 26 / 49	190-60
Solid casting EN124 D400 Ventilation	2651 060 10	D400	6503 / 14 / 26 / 49	190-60S
Solid casting EN124, square frame	2652 060 00	D400	6506 60-1	
Solid casting EN124, square frame	2652 080 00	D400	6506 80	
Solid casting, EN124, square frame, Ventilation	2653 060 00	D400	6507	
Solid casting, EN124, ROLLTRANSIT	2657 060 00	D400		
Solid casting, EN124, ROLLTRANSIT, Ventilation	2658 060 00	D400		
Solid casting water-tight screw lock	2660 060 02	A15	6230	131-60
Solid casting water-tight bar lock	2660 060 03	A15	6230	
Solid casting water-tight bar lock	2661 040 03	B125	6231 RV	
Solid casting water-tight bar lock	2661 050 03	B125	6231 RV	
Solid casting water-tight screw lock	2661 060 02	B125	6231 RV	135-60

Subject to change without notice

<b>Designation</b>	<b>Von Roll hydro</b>	<b>EN 124</b>	<b>Erzenberg</b>	<b>BGS</b>
Solid casting water-tight bar lock	2661 060 03	B125	6231 RV	
Solid casting water-tight bar lock	2661 080 03	B125	6231 RV	
Cistern cover, with inspection cover	2668 100 03			318-100
Cistern cover, with inspection cover centred	2670 080 02		6237	
Cistern cover, with inspection cover centred	2670 100 02		6237	
Cistern cover, with inspection cover	2671 080 02		6238	
Cistern cover, with inspection cover	2671 100 02		6238	319-100
<b>Cast-iron / concrete manhole covers</b>				
GUBE with pick hole	2703 060 50	B125	6587 / 5	435 / 440-60B
GUBE with pick hole Ventilation	2704 060 50	B125	6588 / 5	445 / 450-60B
GUBE EN 124 D400 / VSS	2716 060 00	D400	6577	480-60
GUBE EN 124 D400 / VSS	2716 060 50	D400	6577	480-60B
GUBE EN 124 D400 / VSS	2716 060 60	D400	6577	480-60BS
GUBE, EN 124 D400 / VSS PISO	2717 010 60	D400		
GUBE EN 124 D400 / VSS Ventilation	2718 060 00	D400	6578	490-60
GUBE EN 124 D400 / VSS Ventilation	2718 060 50	D400	6578	490-60B
GUBE EN 124 D400 / VSS Ventilation	2718 060 60	D400	6578	490-60BS
GUBE EN 124 D400 / VSS PISO, Ventilation	2719 010 60	D400		
GUBE, 30 to	2729 06 00			
VARIOFILL for cobblestone filling	2730 060 00	D400	6599 / 10N	470-60
GUBE, EN 124 D400 / VSS, variable height	2732 010 60	D400	6511F ( D400 )	N 480
GUBE, EN 124 D400 / VSS, variable height, vent.	2733 010 06	D400	6512F ( D400 )	N 490
GUBE, EN 124 DOPROLL, hinged	2734 060 00	D400		
GUBE, EN124 C250	2745 060 00	C250	6587 / 10 N	440-60
GUBE, EN124 C250	2745 060 50	C250	6587 / 10 NF	440-60B
GUBE with Unigriff, EN124, for internal pressure	2746 060 57	C250		
GUBE EN 124 D400	2750 060 00	D400	6565 / 70 / 77 / 80	480-60
GUBE EN 124 D400	2750 060 50	D400	6565 / 70 / 77 / 80F	480-60B
GUBE EN 124 D400	2750 060 60	D400	6565 / 70 / 77 / 80F	480-60BS
GUBE EN 124 D400 Ventilation	2751 060 00	D400	6566 / 71 / 78 / 81	490-60
GUBE EN 124 D400 Ventilation	2751 060 50	D400	6566 / 71 / 78 / 81F	490-60B
GUBE EN 124 D400 Ventilation	2751 060 60	D400	6566 / 71 / 78 / 81F	490-60BS
GUBE EN 124, ROLLTRANSIT	2757 06 50	D400		
<b>Street gratings (top assemblies)</b>				
Perforated grating, square frame	2801 060 00	A15	6185	621-60Q
Perforated grating	2803 060 00	A15	6155	621-60C
Perforated grating	2805 060 00	A15	6210	621-60
Perforated grating, square frame	2811 060 00	B125	6186	625-60Q
Perforated grating	2813 060 00	B125	6156	625-60C
Perforated grating	2815 030 00	B125	6220	625-30
Perforated grating	2815 040 00	B125	6220	625-40
Perforated grating	2815 050 00	B125	6220	625-50
Perforated grating	2815 060 00	B125	6220	625-60
Perforated grating, 5 t	2815 070 00		6220	625-70

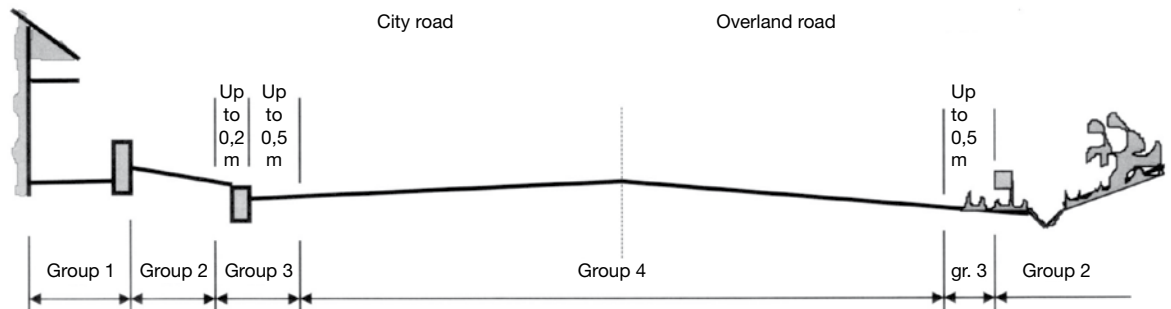
Subject to change without notice

**General data**
**Building-quality cast-iron**

Designation	Von Roll hydro	EN 124	Erzenberg	BGS
Perforated grating, 5 t	2815 080 00		6220	625-80
Flat grating, banana slits, square frame	2901 06 00	C250	6187	635Q
Flat grating, banana slits	2905 050 00	C250	7530	635 / 602-50
Flat grating, banana slits	2905 060 00	C250	7530	635-60
Flat grating, banana slits, PISO	2917 010 10	D400		
Flat grating, banana slits	2918 060 00	D400	7510 / 15 / 20	630-60
Road grating VSS, NIVROLL	2932 005 10	C250	7196 / 7	N 640S50
Road grating VSS, NIVROLL	2932 006 10	C250	7196 / 8	N 640S60
Road grating VSS, NIVROLL, self locking	2933 005 10	D400	7196 / 820	N 680S50
Road grating VSS, NIVROLL, self locking	2933 006 10	D400	7196 / 820	N 680S60
Road grating VSS, NIVROLL, self locking	2933 015 10	D400	7196 / 820	N 680S50
Road grating VSS, NIVROLL, self locking	2933 016 10	D400	7196 / 820	N 680S60
Road grating VSS, NIVROLL, BIROLL	2934 005 10	C250		N 620S50
Road grating VSS, NIVROLL, BIROLL	2934 006 10	C250		N 620S60
Road grating EN124, drainage ditch	2936 001 00	C250	7440	670
Road grating EN124, drainage ditch, PISO	2937 003 10	C250	7196R50/7	
Road grating EN124, drainage ditch, PISO	2937 006 10	C250		
Road grating VSS, PISO, BIROLL	2938 005 10	C250		AL620S05
Road grating VSS, PISO, BIROLL	2938 002 10	C250		AL620S02
Road grating VSS, PISO	2939 005 10	C250		AL680S05
Road grating VSS, PISO	2939 002 10	C250		AL680S02
Road grating VSS	2940 001 00	C250	7196 / 4	640
Road grating VSS	2940 002 10	C250		640-20
Road grating Sibloc EN 124 C250	2941 001 00	D400	7196 / 420	680-10
Road grating Sibloc EN 124 C250	2941 002 00	D400	7196 / 420a	680-20
Road grating Sibloc EN 124 C250	2941 003 00	D400	7196 / 420	690-10
Road grating Sibloc EN 124 C250	2941 004 00	D400	7196 / 420a	690-20
Road grating VSS, BIROLL	2942 001 00	C250		620
Road grating VSS, BIROLL	2942 002 00	C250		620-20
Road grating VSS, SIBLOC-PISO	2943 005 10	D400		AL640S05
Road grating VSS, SIBLOC-PISO	2943 002 10	D400		AL680S02
Road grating VSS, SIBLOC-PISO	2943 015 10	D400		AL690S05
Road grating VSS, SIBLOC-PISO	2943 012 10	D400		AL690S02
Road grating VSS, BIROLL-SIBLOC	2945 001 00	C250		610-10
Road grating VSS, BIROLL-SIBLOC	2945 002 00	C250		610-20
Road grating VSS, BIROLL-SIBLOC, PISO	2946 005 10	C250		AL610S05
Road grating VSS, BIROLL-SIBLOC, PISO	2946 002 10	C250		AL610S02
Road grating VSS, BIROLL-SIBLOC, NIVROLL	2947 005 10	C250		
Road grating VSS, BIROLL-SIBLOC, NIVROLL	2947 006 10	C250		
Grating BIROLL VSS standard	2965 001 00		7452	650-20
Grating BIROLL VSS standard	2965 002 00			650-10
Grating, flat Neoprene	3014 002 00		7420	510-8

Subject to change without notice

**Areas of application according to EN 124 and SN 640 366a standards**



Group	Description	Minimum class
1	Traffic areas which are exclusively used by pedestrians and cyclists. Use by vehicles is to be prevented.	A 15 (previously: 1 t wheel load)
2	Pavements, pedestrian zones and similar surfaces, car-parks and multi-storey car parks (without fast-moving traffic).	B 125 (previously: 5 t wheel load)
3	For top assemblies in peripheral zones, extending into the roadway by up to 0.5 m from the kerb or crash barriers.	C 250
4	Roads, hard shoulders and car-parks that are approved for all kinds of vehicles	D400 (previously: 7,5/ 10 t wheel load)
5	Surfaces that have to support high wheel loads, e.g. docks, airport manoeuvring areas.	E 600 (previously: 30 t wheel load)
6	Surfaces that have to support especially high wheel loads, e.g. docks, airport manoeuvring areas.	F 900

- Validity:** The 2008 edition replaces and cancels all previous editions.
- Range of products:** This catalogue provides detailed information on our standard delivery program, which is continually adapted to meet latest needs.  
Thanks to the great amount of experience gained over the years, we are also able to offer you all kinds of special designs which may differ from our standard programme.
- Item numbering:** All products have an article / order number conforming to the following scheme:
- |        |       |    |   |                |
|--------|-------|----|---|----------------|
| 2660 . | 060 . | 02 | = | article number |
| 2660   |       |    | = | figure number  |
|        | 060   |    | = | type code      |
|        |       | 02 | = | model code     |
- Material quality:** Except where otherwise noted, all important components of all Items are made of cast iron.
- Dimensions:** The measurements quoted are – except for special standard dimensions – in millimetres.
- Installation:** Unless stated to the contrary in the ‘installation’ or ‘applications’ sections, various items must be embedded in in-situ concrete. If a concrete base is included, the whole item must be embedded in a bed of mortar. Some items are shown in figures with concrete bases. Other items can, on request, also be furnished with concrete bases.  
We can only offer a guarantee for the mounting of our manholes, covers and road gratings if they are installed with the aid of our specialists.
- Elastomer inserts:** Depending on traffic volume, the elastomer insert is to be replaced periodically in order to guarantee safety.
- Maintenance:** After every opening of a manhole cover or grating, it is necessary that the seat is cleaned. If necessary, the elastomer insert must be replaced.
- Concrete fillings:** We refer you to the valid SN EN 206-1 standard for concrete.  
The supplier accepts no liability for manhole covers that are not filled with concrete ex works.  
We recommend the use of concrete that is frost and de-icing salt proof is and also the addition of a product which prevents abrasion.
- Responsibility:** All dimensions, data and further information are quoted as exactly as possible. However, a guarantee for absolute correctness cannot be given.  
The right to make changes in the whole catalogue is reserved.
- Copyright:** Illustrations, trademarks, drawings and any parts thereof may neither be employed directly nor for comparison purposes without our explicit approval.  
They may made not be made available to third parties.